

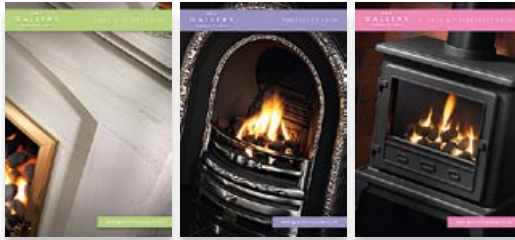
THE
GALLERY
COLLECTION

FIRES & SUITES 08-09



www.galleryfireplaces.co.uk

THE GALLERY COLLECTION



WELCOME TO THE GALLERY COLLECTION

The Gallery Collection presents an extensive range of traditional and contemporary fireplaces, combining supreme craftsmanship, quality materials and elegance in design.

Our desire is to provide you with a superb choice of fireplaces skillfully made with high quality materials, all fitted in your home by reputable retailers so you can enjoy the experience of buying and owning your individual fireplace.

The **FIRES & SUITES** within this brochure represent classic fireplace designs, aimed to complement a variety of interior styles. Each design is available in one of three different stone finishes; Portuguese Limestone, Micromarble or Jura-Stone, all combining with high efficiency gas fires. We hope this wide choice will allow you to select your favourite design and finish. For greater detail on the suite materials please refer to page 1.

CONTENTS

- 01 SUITE MATERIALS EXPLAINED
- 02 SWATCHES
- 03 THE BOWLAND 46
- 05 THE BOWLAND 52
- 07 THE CARTMEL 48
- 09 THE CLIFTON 42
- 11 THE CONISTON 54
- 13 THE COPELAND 48
- 15 THE CRANBOURNE 44
- 17 THE DACRE 54
- 19 THE DURRINGTON 42
- 21 THE DURRINGTON 48
- 23 THE KENDAL 48
- 25 THE RYDAL 48
- 27 CHOOSING YOUR FIRE
- 32 FIRE SELECTION
- 33 ACCESSORIES
- 34 RANGE AT A GLANCE
- 35 FIRE AND SUITE COMPATIBILITY
- 36 FOCUS ON QUALITY

Of particular interest are the micromarble suites. These have some exquisite detail that is rarely seen in suites of this material. This is a testament to the skill of the craftsmen who are making these products with great care and attention.

We have pictured each suite design in a variety of options to demonstrate some of the many different combinations that can be achieved. A suite consists of the mantel, back panel and hearth.

Every suite in this brochure can be fitted against a flat wall without a chimney, if chosen with an electric fire, all that is required is a power point.

We have generally shown the suites with gas and electric fire options, if burning solid fuel is your preference then please select a Portuguese Limestone suite and ask for a solid fuel hearth or refer to our other brochures. For a complete selection of suitable products please see our **FIREPLACES** brochure for a great range of inserts and the **STOVES & FIREBASKETS** brochure for a superb range of baskets and for a super selection of stoves.





THE CRANBOURNE 44 SUITE *Mocha Beige*

BASKET: THE NEON POLISHED, SLIPS: MOCHA BEIGE, HEARTH: MOCHA BEIGE
CHAMBER: BLACK PAINTED REEDED FIREBOARD/ FIRE: DECORATIVE GAS FIRE WITH CERAMIC CHARCOAL

SUITE MATERIALS EXPLAINED

PORTUGUESE LIMESTONE



AVAILABLE IN ALL SUITE DESIGNS

This is natural stone, cut straight from the earth. The stone is sedimentary limestone formed over 50 million years ago. The characteristic darker veins on the light background, intermingled with fossils of plants and animal life all add to the beauty and individuality of this great material.

To find 'blooms', lighter and darker veins, 'whisps' of fossilised fern leaves and other unique features are not considered as defects but are part of the experience of owning a Portuguese Limestone suite. All the suites shown in this brochure can be purchased, made from PORTUGUESE LIMESTONE and come complete with matching hearth and three-piece back panel.

MICROMARBLE – MOCHA BEIGE & MARFIL



AVAILABLE IN SUITES: THE CARTMEL, THE DURRINGTONS (42 & 48), THE CRANBOURNE & THE COPELAND



AVAILABLE IN SUITES: THE CLIFTON, THE DACRE, THE KENDAL, THE RYDAL, THE CONISTON & THE BOWLAND (46 & 52)

An engineered stone, manufactured from crushed marble and specially developed resins, is used to make the suites shown in this brochure. The more uniform finish of Marfil is the chosen material for The Clifton, The Dacre, The Kendal, The Coniston, The Bowlands and The Rydal Suites.

The attractive mottle/swirl patterned Mocha Beige material is used to make The Cartmel, The Durringtons, The Cranbourne and The Copeland suites.

The Clifton, The Durrington 42 and The Cranbourne are supplied with a three piece back panel whilst the remainder can be supplied with single piece back panels. Each suite is sold with its matching hearth.

JURA-STONE – COTSWOLD & CHILTERN



AVAILABLE IN SUITES: THE CLIFTON, THE DACRE, THE KENDAL, THE RYDAL & THE COPELAND



AVAILABLE IN SUITES: THE CARTMEL, THE DURRINGTONS (42 & 48), THE CONISTON, THE CRANBOURNE, THE KENDAL & THE BOWLANDS (46 & 52)

Another natural product, marble, is used in the construction of these suites. JURA-STONE is made from aesthetically unappealing sheets of solid marble and then coated with one of two great finishes. These finishes are the smooth Cotswold and the slightly textured Chiltern. Both finishes give a consistent appearance of stone.

The Clifton, The Dacre, The Rydal and The Copeland suites benefit from the Cotswold finish; The Cartmel, The Bowlands, The Coniston, The Durringtons and The Cranbourne are made from the Chiltern finish and the Kendal is made from both finishes.

The Clifton, The Durrington 42 and The Cranbourne are supplied with a three piece back panel whilst the remainder can be supplied with single piece or three piece back panels. Each suite is sold with its matching hearth.

To help further with the differences in the materials shown in this brochure, please refer to the opposite page. If colour is critical to you then please discuss this with your retailer

SWATCHES

A solid, warm beige color with a fine, uniform texture.

MARFIL

A warm beige color with subtle, organic variations and faint, light-colored veining or marbling patterns.

MOCHA BEIGE

A light beige color with prominent, irregular, and somewhat wavy veining patterns in a slightly darker shade, creating a layered, natural stone appearance.

PORTUGUESE LIMESTONE

A light, neutral beige color with a fine, consistent texture and very subtle, sparse dark speckles.

CHILTERN

A very light, off-white or pale beige color with a fine, consistent texture and very subtle, sparse dark speckles.

COTSWOLD



THE BOWLAND 46 SUITE *Portuguese Limestone*

FIRE: DECORATIVE OPEN FRONTED GAS FIRE WITH PEBBLES, DIAMOND BLACK TRIM & DIAMOND BLACK 18" BAUHAUS FRET, SLIPS & HEARTH: PORTUGUESE LIMESTONE



THE BOWLAND 46 SUITE *Chiltern*

FIRE: SOLARIS OPEN FRONTED GAS CONVECTOR FIRE IN ANTIQUE BRASS FINISH WITH CERAMIC COALS, BACK PANEL & HEARTH: CHILTERN





THE BOWLAND 46 SUITE *Marfil*

FIRE: HIGH EFFICIENCY GLASS FRONTED CONVECTOR GAS FIRE WITH CERAMIC COALS AND BLACK CURVED TRIM AND FRET, BACK PANEL & HEARTH: MARFIL



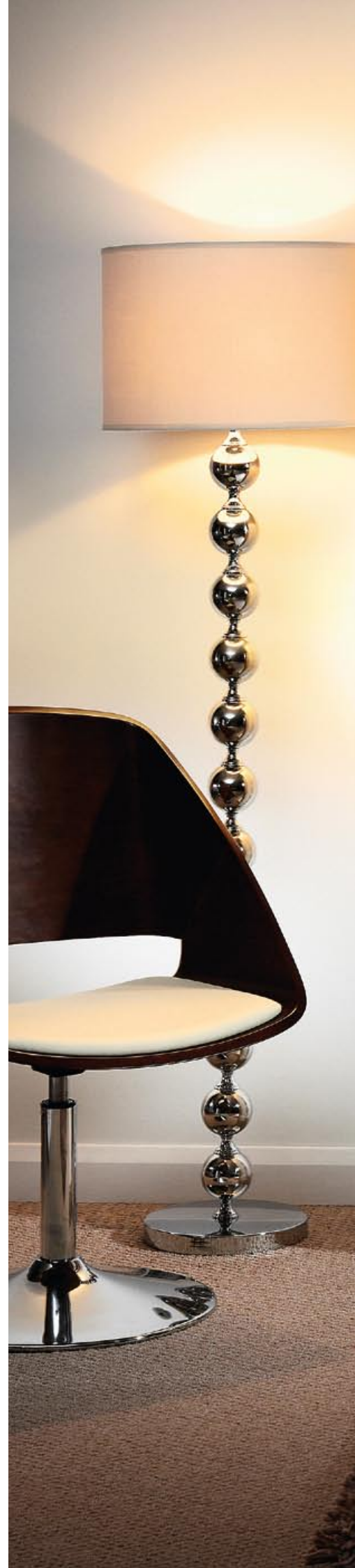
THE BOWLAND 52 SUITE *Portuguese Limestone*

FIRE: DECORATIVE OPEN FRONTED GAS FIRE WITH PEBBLES, ANTIQUE FINISH TRIM & 16" BLENHEIM FRET, SLIPS & HEARTH: PORTUGUESE LIMESTONE



THE BOWLAND 52 SUITE *Marfil*

FIRE: ELECTRIC INSET, BRUSHED TRIM & POLISHED 16" EMPEROR FRET, BACK PANEL & HEARTH: MARFIL





THE BOWLAND 52 SUITE *Chiltern*

FIRE: HIGH EFFICIENCY GLASS FRONTED GAS CONVECTOR FIRE WITH CERAMIC COALS
AND BRUSHED STEEL FLAT TRIM AND FRET, BACK PANEL & HEARTH: CHILTERN



THE CARTMEL 48 SUITE *Mocha Beige*

FIRE: SOLARIS OPEN FRONTED GAS CONVECTOR FIRE IN CHROME FINISH
WITH CERAMIC COALS, BACK PANEL & HEARTH: MOCHA BEIGE



THE CARTMEL 48 SUITE *Chiltern*

BASKET: THE ZEN CHROME, FIRE: DECORATIVE GAS FIRE WITH CERAMIC DRIFTWOOD,
CHAMBER: NATURAL REEDED FIREBOARD, SLIPS: CHILTERN, HEARTH: 48" BLACK GRANITE



THE CARTMEL 48 SUITE *Portuguese Limestone*

FIRE: DECORATIVE OPEN FRONTED GAS FIRE WITH PEBBLES, ANTIQUE BRASS FINISH TRIM & 18" BAUHAUS FRET, SLIPS & HEARTH: PORTUGUESE LIMESTONE



THE CLIFTON 42 SUITE *Portuguese Limestone*

FIRE: ELECTRIC INSET, POLISHED TRIM & CHROME 16" BAUHAUS FRET,
SLIPS & HEARTH: PORTUGUESE LIMESTONE



THE CLIFTON 42 SUITE *Marfil*

FIRE: AURORA OPEN FRONTED GAS CONVECTOR FIRE IN CHROME FINISH
WITH CERAMIC COALS, SLIPS & HEARTH: MARFIL





THE CLIFTON 42 SUITE *Cotswold*

FIREBASKET: PULSE CHROME WITH DECORATIVE GAS FIRE & HIGH DEFINITION CERAMIC LOG SET
CHAMBER: PLAIN REEDED FIREBOARD, SLIPS, HEARTH & BACK HEARTH: COTSWOLD



THE CONISTON 54 SUITE *Marfil*

FIRE: SOLARIS OPEN FRONTED GAS CONVECTOR FIRE IN ANTIQUE FINISH WITH CERAMIC COALS, BACK PANEL: MARFIL, HEARTH: 54" BEVELLED BLACK GRANITE



THE CONISTON 54 SUITE *Chiltern*

BASKET: THE CANTILEVER POLISHED, FIRE: DECORATIVE GAS FIRE WITH CERAMIC PEBBLES, CHAMBER: BLACK PAINTED REEDED FIREBOARD, BACK PANEL: CHILTERN, HEARTH: 54" BEVELLED GRANITE





THE CONISTON 54 SUITE *Portuguese Limestone*

STOVE: THE GAS TIGER, FIRE: DECORATIVE GAS FIRE WITH CERAMIC COALS
CHAMBER: PLAIN REEDED FIREBOARD (SLIPS NOT SHOWN), HEARTH: PORTUGUESE LIMESTONE



THE COPELAND 48 SUITE *Mocha Beige*

FIRE: ELECTRIC INSET, BRUSHED TRIM & POLISHED 16" BALTIMORE FRET,
BACK PANEL & HEARTH: MOCHA BEIGE



THE COPELAND 48 SUITE *Cotswold*

FIRE: DECORATIVE OPEN FRONTED GAS FIRE WITH PEBBLES, BLACK TRIM
& 16" BAUHAUS FRET, BACK PANEL & HEARTH: COTSWOLD





THE COPELAND 48 SUITE *Portuguese Limestone*

BASKET: THE QUEEN ANNE ANTIQUE BRASS FINISH, FIRE: DECORATIVE GAS FIRE WITH CERAMIC COAL
CHAMBER: PLAIN REEDED FIREBOARD (SLIPS NOT SHOWN), HEARTH: PORTUGUESE LIMESTONE



THE CRANBOURNE 44 SUITE *Portuguese Limestone*

FIRE: DECORATIVE OPEN FRONTED GAS FIRE WITH PEBBLES, POLISHED TRIM & CHROME FINISH 18" BAUHAUS FRET, SLIPS & HEARTH: PORTUGUESE LIMESTONE



THE CRANBOURNE 44 SUITE *Chiltern*

FIRE: DECORATIVE OPEN FRONTED GAS FIRE WITH COALS, BRUSHED TRIM & POLISHED 16" CLEVEDON FRET, SLIPS & HEARTH: CHILTERN





THE CRANBOURNE 44 SUITE *Mocha Beige*

FIRE: HIGH EFFICIENCY GLASS FRONTED GAS CONVECTOR FIRE WITH CERAMIC COALS AND BRUSHED STEEL FLAT TRIM AND FRET, SLIPS & HEARTH: MOCHA BEIGE



THE DACRE 54 SUITE *Portuguese Limestone*

FIRE: DECORATIVE OPEN FRONTED FIRE WITH COALS, BLACK TRIM &
16" BALTIMORE FRET, SLIPS & HEARTH: PORTUGUESE LIMESTONE



THE DACRE 54 SUITE *Cotswold*

BASKET: THE SMALL COTTAGE POLISHED, FIRE: DECORATIVE GAS FIRE WITH CERAMIC PEBBLES
CHAMBER: BLACK PAINTED REEDED FIREBOARD, SLIPS & HEARTH: COTSWOLD





THE DACRE 54 SUITE *Marfil*

BASKET: MATRIX POLISHED, FIRE: DECORATIVE GAS FIRE WITH CERAMIC LOGS,
HEARTH: MARFIL, CHAMBER: PLAIN REEDED FIREBOARD (BACK PANELS NOT USED)



THE DURRINGTON 42 SUITE *Mocha Beige* (shown here without shelf)

FIRE: HIGH EFFICIENCY GLASS FRONTED GAS CONVECTOR FIRE WITH CERAMIC PEBBLES AND BRUSHED STEEL CURVED TRIM AND FRET, SLIPS & HEARTH: MOCHA BEIGE



THE DURRINGTON 42 SUITE *Chiltern*

STOVE: FIREFOX 5 GAS, CHAMBER: PLAIN REEDED FIREBOARD (SLIPS NOT USED), HEARTH: CHILTERN, BACK HEARTH: GRANITE





THE DURRINGTON 42 SUITE *Portuguese Limestone*

FIRE: AURORA OPEN FRONTED GAS CONVECTOR FIRE CHROME FINISH
WITH CERAMIC COALS, SLIPS & HEARTH: PORTUGUESE LIMESTONE



THE DURRINGTON 48 SUITE *Portuguese Limestone*

FIRE: HIGH EFFICIENCY GLASS FRONTED GAS CONVECTOR FIRE WITH CERAMIC COALS
AND BLACK CURVED TRIM AND FRET, SLIPS & HEARTH: PORTUGUESE LIMESTONE



THE DURRINGTON 48 SUITE *Chiltern*

BASKET: PULSE CHROME FINISH, FIRE: DECORATIVE GAS FIRE WITH CERAMIC LOGS
CHAMBER: PLAIN REEDED FIREBOARD, SLIPS & HEARTH: CHILTERN





THE DURRINGTON 48 SUITE *Mocha Beige*

FIRE: LUNAR OPEN FRONTED GAS CONVECTOR FIRE IN HIGHLIGHT
FINISH WITH CERAMIC PEBBLES, SLIPS & HEARTH: MOCHA BEIGE



THE KENDAL 48 SUITE *Portuguese Limestone*

FIRE: DECORATIVE OPEN FRONTED GAS FIRE WITH PEBBLES, ANTIQUE BRASS TRIM & 16" BLENHEIM FRET, SLIPS & HEARTH: PORTUGUESE LIMESTONE



THE KENDAL 48 SUITE *Marfil*

FIRE: LUNAR OPEN FRONTED GAS CONVECTOR FIRE IN HIGHLIGHT FINISH WITH CERAMIC PEBBLES, BACK PANEL & HEARTH: MARFIL





THE KENDAL 48 SUITE *Cotswold* (also available in *Chiltern*)

FIRE: DECORATIVE OPEN FRONTED GAS FIRE WITH COAL, ANTIQUE BRASS
TRIM & 16" BAUHAUS FRET, BACK PANEL & HEARTH: COTSWOLD



THE RYDAL 48 SUITE *Portuguese Limestone*

STOVE: FIREFOX 5 GAS, CHAMBER: SLABBED BRICK BOARD (SLIPS NOT USED),
HEARTH & BACK HEARTH: PORTUGUESE LIMESTONE



THE RYDAL 48 SUITE *Cotswold*

FIRE: ELECTRIC INSET, BRUSHED TRIM WITH 16" POLISHED EMPEROR FRET,
BACK PANEL & HEARTH: COTSWOLD





THE RYDAL 48 SUITE *Marfil*

FIRE: HIGH EFFICIENCY GLASS FRONTED GAS CONVECTOR FIRE WITH CERAMIC PEBBLES AND HIGHLIGHTED TRIM AND FRET, BACK PANEL & HEARTH: MARFIL

CONSUMERS CHOSE EFFICIENCY AND AESTHETICS COMBINED

The reason for choosing your fire is no longer based as much on looks as it once was, in the current environment the efficiency of a product can be a primary factor, we offer efficiency without compromise.

SAVING YOU MONEY

- Using the latest in fire technology Gallery bring you some of the most efficient fires on the market.
- With energy prices on the increase this range of fires will reduce running costs compared with many existing older models.

HOME INFORMATION PACKS MADE COMPULSORY

- Since 14 December 2007 every home put on the market, no matter what size, must have a Home Information Pack.
- The pack must include an Energy Performance Certificate that contains information on the efficiency rating of your house.

THE EFFECTS OF OUR CARBON FOOTPRINT AND CLIMATE CHANGES

- The average household creates around 6 tonnes of CO₂ a year, from burning fossil fuels and it is changing our climate.
- Energy saving products i.e efficient appliances, will cost less to run and help reduce carbon emissions, Gallery Fireplaces offer one of the most efficient Fires available to buy.

You have decided upon the style and design of the fireplace that best suites your needs and now its time to choose your fire. The efficiency of your fire may play a huge factor in the decision making process so we feel it is important to explain the differences of efficiency and what that means in terms of energy and environmental costs.

The Gallery Collection offer four fire options, over the next four pages we show product examples and explain key features about the products



HIGH EFFICIENCY GLASS FRONTED GAS CONVECTOR FIRES



OPEN FRONTED GAS CONVECTOR FIRES

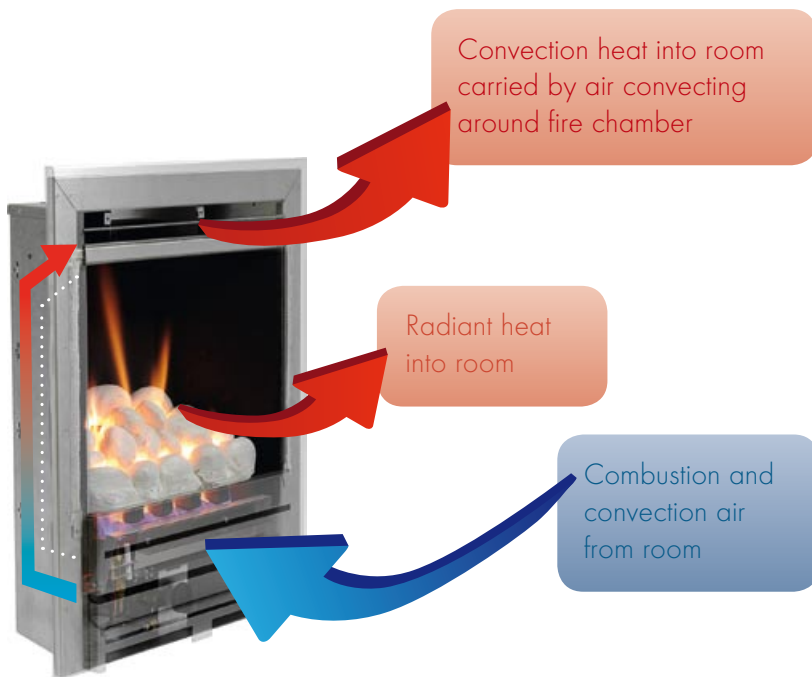


DECORATIVE OPEN FRONTED GAS CONVECTOR FIRES



ELECTRIC FIRES

GLASS FRONTED GAS CONVECTOR FIRE



KEY FEATURES:

- Up to 83% Efficient
- Up to 4.2kw Heat Output
- One of the most efficient fires available to buy
- Glass front helps provide high glow in ceramic fuel bed at low settings
- Glass front stops heat from your room being lost up the chimney when the fire is switched off



Examples of High efficiency Gas fires are shown throughout this brochure as detailed below.

Page 4: Shown with Bowland 46 suite Marfil

Page 6: Shown with Bowland 52 suite Chiltern

Page 16: Shown with Cranbourne 44 suite Mocha Beige

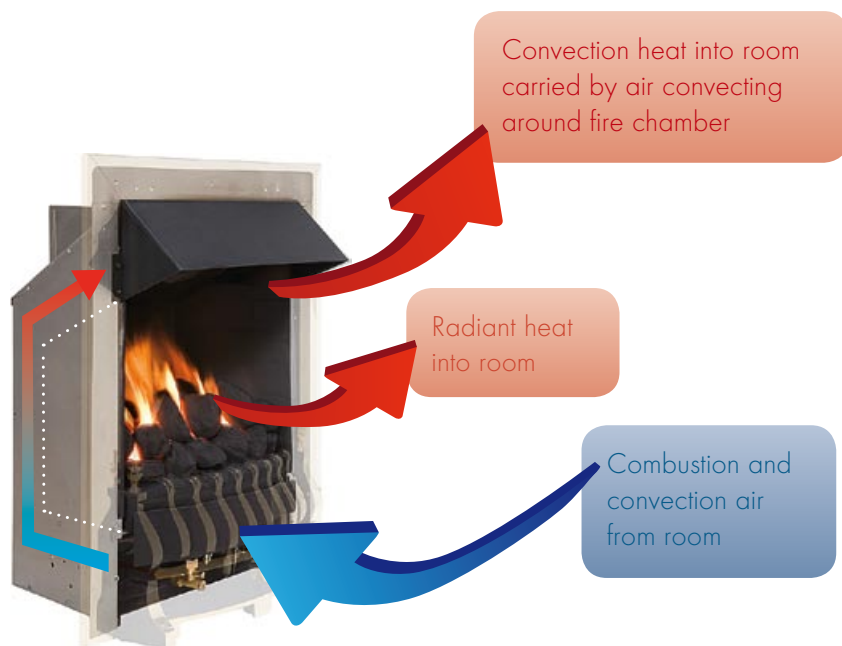
Page 19: Shown with Durrington 42 suite Mocha Beige

Page 21: Shown with Durrington 48 suite Portuguese Limestone

Page 26: Shown with Rydal 48 suite Marfil

CHOOSING YOUR FIRE

OPEN FRONTED GAS CONVECTOR FIRE



KEY FEATURES:

- Up to 65% Efficient
- Up to 4kW Output
- One of the most efficient open fronted fires on the market



Examples of Open Fronted Gas Convector Fires are shown throughout this brochure as detailed below

Page 3: Shown with Bowland 46 suite Chiltern

Page 7: Shown with Cartmel 48 suite Mocha Beige

Page 9: Shown with Clifton 42 suite Marfil

Page 11: Shown with Coniston 52 suite Marfil

Page 20: Shown with Durrington 42 suite Portuguese Limestone

Page 22: Shown with Durrington 48 suite Mocha Beige

Page 23: Shown with Kendal 48 suite Marfil

DECORATIVE OPEN FRONTED GAS FIRE

KEY FEATURES:

- Up to 50% Efficient
- Up to 3.5kW Output
- Realistic Natural look



Examples of Decorative Open Fronted Gas fires are shown throughout this brochure as detailed below.

Page 3: Shown with Bowland 46 suite Portuguese Limestone

Page 5: Shown with Bowland 52 suite Portuguese Limestone

Page 8: Shown with Cartmel 48 suite Portuguese Limestone

Page 13: Shown with Copeland 48 suite Cotswold

Page 15: Shown with Cranbourne 44 suite Chiltern

Page 17: Shown with Dacre 54 suite Portuguese Limestone

Page 23: Shown with Kendal 48 suite Portuguese Limestone

Page 24: Shown with Kendal 48 suite Cotswold Jurastone

CHOOSING YOUR FIRE

ELECTRIC FIRE



Up to 2 kW heat output into room

KEY FEATURES:

- 100% Efficient
- Up to 2kw Heat Output
- Flame effect
- Suitable for homes without a chimney



Examples of Electric Fires are shown throughout this brochure as detailed below

Page 5: Shown with Bowland 52 suite Marfil

Page 9: Shown with Clifton 42 Portuguese Limestone

Page 13: Shown with Copeland 48 suite Mocha Beige

Page 25: Shown with Rydal 48 Suite Cotswold

FIRE SELECTION

FIRE CLASSIFICATION	OUTPUT (kW)	INSET DEPTH (MM)
CLASS 1 OPEN FRONTED CONVECTOR GAS FIRE	4.2	235
CLASS 2 OPEN FRONTED CONVECTOR GAS FIRE	3.9	135
POWERFLUE OPEN FRONTED CONVECTOR GAS FIRE	3.0	115
CLASS 1 GLASS FRONTED CONVECTOR GAS FIRE	4.2	187
CLASS 2 GLASS FRONTED CONVECTOR GAS FIRE	4.2	187
DECORATIVE OPEN FRONTED GAS FIRE	2.1	245
ELECTRIC FIRE	2	75

GLASS FRONTED GAS CONVECTOR FIRES



BRUSHED STEEL CURVED TRIM AND FRET
SHOWN WITH CERAMIC PEBBLE FUEL BED



BLACK CURVED TRIM AND FRET
SHOWN WITH CERAMIC COAL FUEL BED



BRUSHED STEEL FLAT TRIM AND FRET
SHOWN WITH CERAMIC COAL FUEL BED



HIGHLIGHTED FLAT TRIM AND FRET
SHOWN WITH CERAMIC PEBBLE FUEL BED

CERAMIC OPTIONS FOR HOT BOX FIRES



HIGH DEFINITION CERAMIC LOG SET



PEBBLES



COAL



LOGS



CHARCOAL



FIREWOOD



DRIFTWOOD

OPEN FRONTED GAS CONVECTOR FIRES



AURORA

- MANUAL POWERFLUE OPTION
- CLASS 1 CONVECTOR
- CLASS 2 CONVECTOR
- MANUAL CONTROL
- COAL (PEBBLES AS OPTIONAL EXTRA)
- FINISHES: BLACK, CHROME AND ANTIQUE BRASS
- LPG OPTION
- UPTO 4kW HEATING



LUNAR

- MANUAL POWERFLUE OPTION
- CLASS 1 CONVECTOR
- CLASS 2 CONVECTOR
- MANUAL OR SLIDE CONTROL
- COAL (PEBBLES AS OPTIONAL EXTRA)
- FINISH: HIGHLIGHTED
- LPG OPTION
- UPTO 4kW HEATING



SOLARIS

- CLASS 1 CONVECTOR
- CLASS 2 CONVECTOR
- SLIDE CONTROL ONLY
- COAL (PEBBLES AS OPTIONAL EXTRA)
- FINISHES: BLACK, CHROME AND ANTIQUE BRASS
- LPG OPTION
- UPTO 4kW HEATING

DECORATIVE OPEN FRONTED GAS AND ELECTRIC INSET FIRES



GAS FIRES

- CLASS 1 OR CLASS 2 DGF
- MANUAL OR REMOTE CONTROL
- CHOICE OF CERAMICS
- ANY TRIM AND FRET COMBINATION
- LPG OPTION



ELECTRIC FIRES

- 1 AND 2 kW SETTINGS
- COAL AND PEBBLE OPTIONS
- REMOTE CONTROL
- ANY TRIM AND FRET COMBINATION

TRIM FINISHES



FRET OPTIONS FOR HOT BOX AND ELECTRIC INSET FIRES



BAUHAUS®
BLACK
AVAILABLE IN 16" & 18"



BAUHAUS®
ANTIQUÉ BRASS FINISH
AVAILABLE IN 16" & 18"



BAUHAUS®
POLISHED
AVAILABLE IN 16" & 18"



BAUHAUS®
CHROME FINISH
AVAILABLE IN 16" & 18"



BAUHAUS®
DIAMOND BLACK
AVAILABLE IN 16" & 18"



CLEVELDON
FINISHES: BLACK AND POLISHED
AVAILABLE IN 16"



EMPEROR
FINISHES: BLACK AND POLISHED
AVAILABLE IN 16"



BALTIMORE
FINISHES: BLACK AND POLISHED
AVAILABLE IN 16"



BLÉNHEIM
ANTIQUÉ BRASS FINISH
AVAILABLE IN 16"



BLÉNHEIM
HIGHLIGHT
AVAILABLE IN 16"

ACCESSORIES

BUCKETS

All sizes in millimetres



CATHEDRAL
Size dia: 228 / 254 / 330
Black x 3 **Code: 1305**



SALISBURY
Size dia: 228
Black x 1 **Code: 0322**



SALISBURY
Size dia: 228
Brass x 1 **Code: 1300**



SALISBURY
Size dia: 228
Pewter x 1 **Code: 1368**



WATERLOO
Size dia: 279
Black x 1 **Code: 0327**

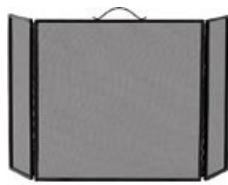


WATERLOO
Size dia: 279
Pewter x 1 **Code: 0328**

SCREENS



CRUSADE
Black single panel guard
609 (H) x 609 (W)
Code: 2022



CRUSADE
Black 3 panel guard
609 (H) x 609 (W) x 177 Panels
Code: 2032



CRUSADE
Black curved guard
558 (H) x 635 (W) x 127 return
Code: 2042



CRUSADE
Black shaped guard
584 (H) x 533 (W) x 152 return
Code: 2052



CRUSADE
4 fold guard with black finish
635 (H) x 229 (W) Panels
Code: 2058



CAMBER
Black curved guard
Code 2065: 610 (H) x 660 (W)
Code 2067: 660 (H) x 760 (W)



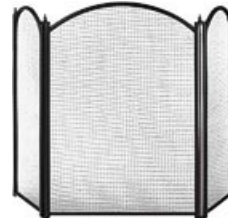
DYNASTY
Pewter 3 panel screen
660 (H) x 431 (W)
Code: 1228



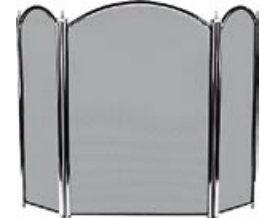
DYNASTY
Antique 3 panel screen
660 (H) x 431 (W)
Code: 1795



DYNASTY
Brass 3 panel screen
660 (H) x 431 (W)
Code: 1794



DYNASTY
Black 3 panel screen
660 (H) x 431 (W)
Code: 1796



DYNASTY
Chrome 3 panel screen
660 (H) x 431 (W)
Code: 1227



DYNASTY
Pewter 4 panel screen
635 (H) x 203 (W) panels
Code: 1230



DYNASTY
Brass 4 panel screen
635 (H) x 203 (W) panels
Code: 1791



DYNASTY
Black 4 panel screen
635 (H) x 203 (W) panels
Code: 1771

COMPANION SETS



VICTORIAN
Black / Pewter
406 (H), **Code: 1103**



VICTORIAN
Black
406 (H), **Code: 1145**



EMPRESS
Brass
406 (H), **Code: 1116**



MANOR
Black
558 (H), **Code: 1065**



MANOR
Black / Pewter
558 (H), **Code: 1056**



MANOR
Black / Brass
558 (H), **Code: 1066**



TEMPLE
Black
584 (H), **Code: 1191**



SMALL MERLIN
Black / Chrome
650 (H), **Code: 1109**



SMALL MERLIN
Pewter
650 (H), **Code: 1108**



VISCOUNT
Black
635 (H), **Code: 1190**



VISCOUNT
Pewter
635 (H), **Code: 1195**



ELIPSE
Black
540 (H), **Code: 2105**



ELIPSE
Pewter
540 (H), **Code: 2109**

THE RANGE AT A GLANCE



THE BOWLAND 46 SUITE
Portuguese Limestone



THE BOWLAND 52 SUITE
Marfil



THE CARTMEL 48 SUITE
Chiltern



THE CLIFTON 42 SUITE
Portuguese Limestone



THE CONISTON 54 SUITE
Portuguese Limestone



THE COPELAND 48 SUITE
Mocha Beige



THE CRANBOURNE 44 SUITE
Mocha Beige



THE DACRE 54 SUITE
Portuguese Limestone



THE DURRINGTON 42 SUITE
Mocha Beige (shown without shelf)



THE DURRINGTON 48 SUITE
Chiltern (shown with shelf)



THE KENDAL 48 SUITE
Marfil



THE RYDAL 48 SUITE
Marfil

FIRE & SUITE COMPATIBILITY

FIREFRAME AND HOTBOX OPTIONS

STEP ONE: Identify the chimney type in your house. (From Table below).

STEP TWO: Decide the type of fire that would suit your chimney and your preferred source of fuel. Ensure that the fire can be matched with a suitable Suite combination.

TABLE 1 KEY - TYPES OF FIRE

NG - Natural gas. Available for all chimney types.

SF - Solid fuel.

LPG - Liquid Petroleum Gas (LPG). Bottled gas.

POWER FLUE - Fan assisted gas fire for use where no flue is available. Must be fitted against an outside wall. Up to 3.5kW heat output.

SLIDE - Easy access, high level manual control.

ELECTRIC WITH HEAT - Decorative electric fire. Up to 2kW heat output.

TABLE 1



CLASS 1

Commonly in older houses, earlier than 1960. The Class 1 chimney is identifiable by 7" (180mm) or greater diameter flue. The existing chimney must be structurally sound, please check before the installation of a new fireplace.



CLASS 2

Either an older house where the existing chimney has been lined by a proprietary steel flue or a newer house with a steel flue built in. This chimney type is identifiable by a 5" (130 mm) diameter flue and a steel flue terminal.



PRE-CAST FLUE

Modern houses generally later than 1960 often have a pre-cast concrete chimney system, identifiable by a rectangular box section flue and a terminal, as illustrated in the picture.



NO CHIMNEY

Modern houses often have no chimney. You can use a modern decorative electric fire, either with no heat for aesthetics or an efficient fire with up to 2kW heat output.

	SF	NG	LPG	SLIDE	ELECTRIC	NG	LPG	SLIDE	ELECTRIC	NG	LPG	SLIDE	ELECTRIC	POWER FLUE (LPG OR NG)	ELECTRIC
GLASS FRONTED		✓	✓			✓	✓			✓	✓				
AURORA		✓	✓			✓	✓			✓	✓			✓	
LUNAR		✓	✓	✓		✓	✓	✓		✓	✓	✓		✓	
SOLARIS		✓	✓	✓		✓	✓	✓		✓	✓	✓			
DECORATIVE INSET		✓	✓			✓	✓								
ELECTRIC INSET					✓				✓				✓		✓
BASKETS	✓	✓	✓		✓	✓	✓		✓				✓		✓
STOVES	✓	✓	✓			✓	✓								

CHOOSING A SUITE OR MANTEL

STEP ONE: Measure the width of your chimney breast.

STEP TWO: Select a suite that has a shelf and hearth width less than your chimney breast width. (Dimensions A and J in Table 2 below).

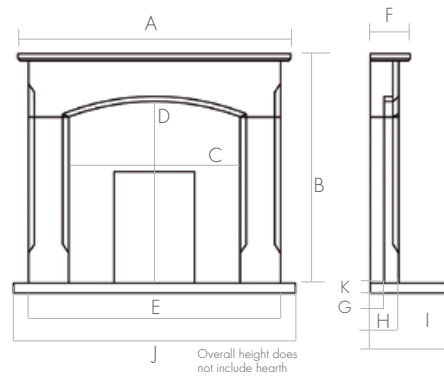


TABLE 2	A	B	C	D	E	F	G	H	I	J	K	PORTUGUESE LIMESTONE	CHILTERN	COTSWOLD	MARFIL	MOCHA BEIGE
BOWLAND 46	mm 1170	984	710	751	1070	175	75	125	380	1170	51	*	*		*	
BOWLAND 52	mm 1320	1036	821	806	1221	175	75	125	380	1320	51	*	*		*	
CARTMEL 48	mm 1220	1040	762	810	1150	180	75	140	380	1220	51	*	*			*
CLIFTON 42	mm 1020	925	660	725	1020	150	75	120	380	1060	51	*		*	*	
CONISTON 54	mm 1370	1120	804	866	1270	200	75	150	380	1370	51	*	*		*	
COPELAND 48	mm 1220	1035	760	815	1120	200	75	143	380	1220	51	*		*		*
CRANBOURNE 44	mm 1120	927	622	673	1016	184	75	120	380	1120	51	*	*			*
DACRE 54	mm 1370	1113	865	840	1265	200	75	143	380	1370	51	*		*	*	
DURRINGTON 42	mm 1066	965	690	755	990	160	75	125	380	1066	51	*	*			*
DURRINGTON 48	mm 1220	1020	760	760	1120	150	75	115	380	1220	51	*	*			*
KENDAL 48	mm 1220	1030	720	810	1120	200	75	150	380	1220	51	*	*	*	*	
RYDAL 48	mm 1220	1019	760	800	1120	180	75	145	380	1220	51	*		*	*	

- NOTES
- 1 - All Portuguese limestone models come complete with their hearths and three-piece back panels
 - 2 - The Clifton, Durrington 42 and the Cranbourne models come supplied with three-piece back panels in all materials
 - 3 - The Chiltern and Cotswold models can be ordered with single piece back panels or three-piece back panels (except the Clifton and The Cranbourne - see note 2)
 - 4 - The Marfil and Mocha Beige models (except the Clifton, Durrington 42 and The Cranbourne - see note 2) can be ordered with single piece back panels.

A FOCUS ON SERVICE FOR YOUR PEACE OF MIND

All cast iron products are manufactured in ISO 9002 accredited manufacturing facilities.

All the gas fires we supply are tested in accordance with CE requirements and are CE marked.

Due to the manufacturing processes all measurements are approximate and may vary slightly so allow for a tolerance of plus or minus 12mm.

In order to achieve some of the colour options, we plate the products using a variety of manufacturing processes. When we state that a product is "Antique Brass finish" or "Chrome finish" there is no intention to mislead. The products are not brass or chrome respectively, they are simply plated to give that effect.

MICROMARBLE & JURA-STONE products are not suitable for solid fuel applications.

The colours shown in the brochures are as accurate as possible, but if the colour you require is critical then please consult your retailer before basing all your decisions on the colours shown here.

Your home may have a chimney type which will allow you to choose any of the fireplaces shown in the brochures. However, please consult the selection charts in the brochures and if you are not clear please consult your HETAS or CORGI (Board Gais in ROI) registered installer or your retailer.

Gas fires with a gas input of 6.9kW or less do not normally require air vents, there are some circumstances where vents may be required. This is determined by your installer carrying out a spillage test during the commissioning process. If your chosen fire has a gas input greater than 6.9kW then a vent will be required. Please ask your retailer for further information.

There are occasions when designs, or products are altered or discontinued without prior notice (a reserved right), so if you are about to set your heart on a particular fireplace, please consult your retailer before making that final commitment.

UNDERSTANDING YOUR NEW GALLERY FIREPLACE COMPONENTS AND THEIR AFTERCARE AND MAINTENANCE.

PORTUGUESE LIMESTONE SUITES

Stone is naturally porous, so all visual surfaces have been pre-sealed to help protect the surface from staining. Protect the surface from coloured liquids such as fruit juices and red wine. In the event of an accident, use a specialist cleaning and resealing kit, following the instructions given by the manufacturer. Where chipping has occurred, use a fine wet and dry sand paper to blend out as necessary.

MICROMARBLE SUITES

Protect the surface from strong coloured solutions and citrus juices as the acid may etch the surface. To maintain the subtle shine of the surface, occasionally wipe over with a solution of general household cleaner and buff with a soft dry cloth. Do not use any bleach or abrasive cleaning agents as these will scuff or dull the shine.

REASSURANCE BEFORE YOU COMMIT TO THE INSTALLATION OF YOUR GALLERY FIREPLACE.

It is a major project to have a new fireplace installed and it is good practice to try and prepare yourself as well as possible.

All installations must be carried out in accordance with the requirements set out in the Building Regulation documents, in particular, Approved Document J. There are independent bodies which have been approved to carry out installations in accordance with these regulations. For gas installations the most recognised independent body is CORGI (Board Gais in ROI) and for solid fuel installations it is HETAS. Please confirm with your retailer that your new fireplace will be installed appropriately. If you have your new fireplace fitted by a CORGI (Board Gais in ROI) or HETAS registered fitter you will be given a certificate stating that your installation has been carried out in accordance with the Building Regulations. If you do not have one of these certificates then you will have to arrange for your local Building Control Officer to inspect your installation and approve it.

Whilst there appear to be no definitive regulations available, a sufficient gap must be provided around the basket when placed inside the fire chamber. This is essential because air must be able to flow into the fire in order for the fuel to burn effectively; the flue and fire chamber surfaces must be kept cool to avoid heat damage from the fire and where applicable gas controls need to be freely accessible.

Your Gallery fireplace is made up of a number of different components and it is important to ensure that your installer not only meets the requirements above, but that he also has the necessary experience to fit ALL those components, for example a Jura-Stone suite with a Fireframe and a powerflue fire.

In the unlikely event that there is a defect in any of the products shown in this brochure, then a replacement will be supplied without hesitation. Of course, this requires the products to be fully inspected prior to installation as no responsibility for re-fitting or redecoration can be accepted if defective products have been installed. In this case and in the case of accidental damage after installation, in-situ repairs can be made by specialists, subject to prior agreement of terms with your retailer.

JURA-STONE SUITES

Jura-stone suites are manufactured from natural stone and finished with a revolutionary, patent applied for durable finish, with the realistic 'cold to touch' feel of natural stone.

Extensive tests prove Jura-Stone to be virtually stain and scratch resistant. If minor scratches occur then please use the small touch up kit supplied. If spillages occur then use a soft, damp lint-free cloth immediately to wipe away the spillage.

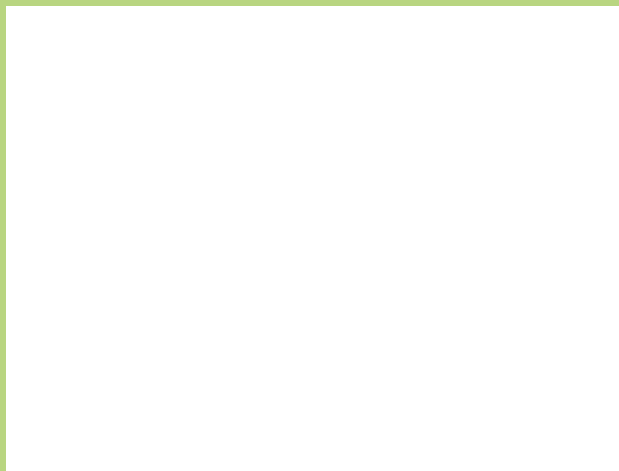
GAS FIRES

A gas fire is a technical piece of equipment and, just like a gas boiler needs regular servicing. Please ensure that you have your gas fire serviced regularly by a CORGI (Board Gais in ROI) registered installer. This will help you enjoy safe and trouble free enjoyment of your fireplace for years to come and may be a requirement of the Government's Home Information Pack.

THE GALLERY COLLECTION



Original Gallery Collection products are  (anti copying in design) registered, and are therefore protected by UK design right. We will not compromise on quality, neither should you, so in order for you to receive products manufactured to the highest possible standards, insist only on a genuine Gallery Collection Fireplace.



DEALER STAMP



www.galleryfireplaces.co.uk